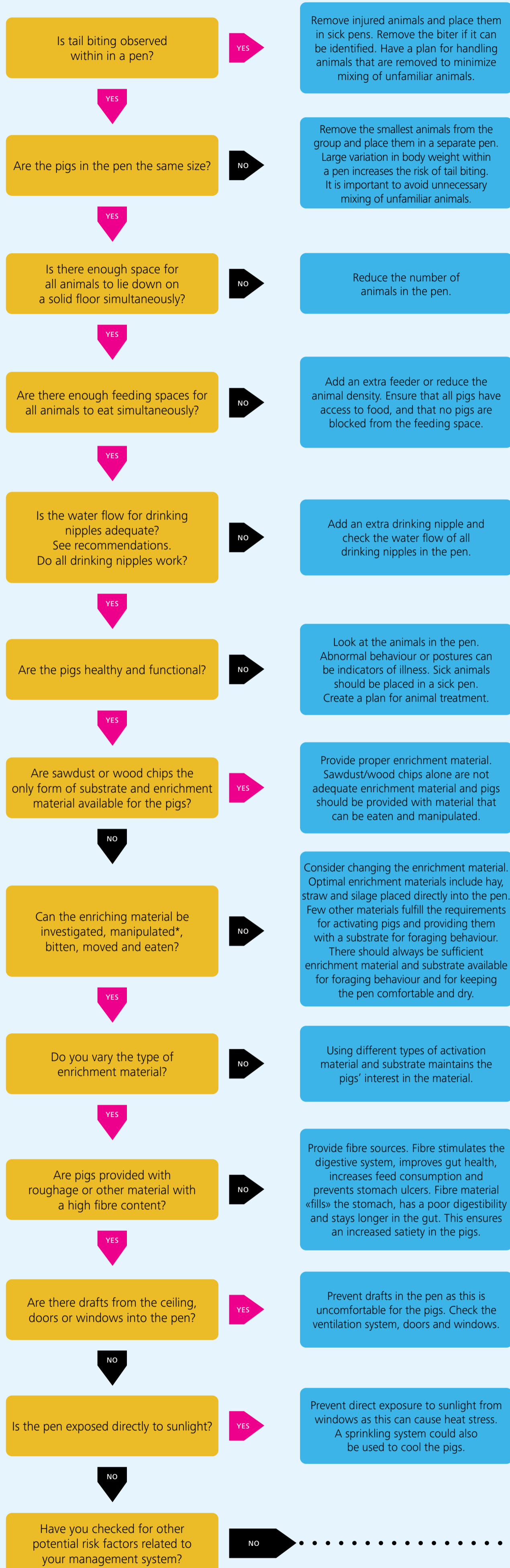


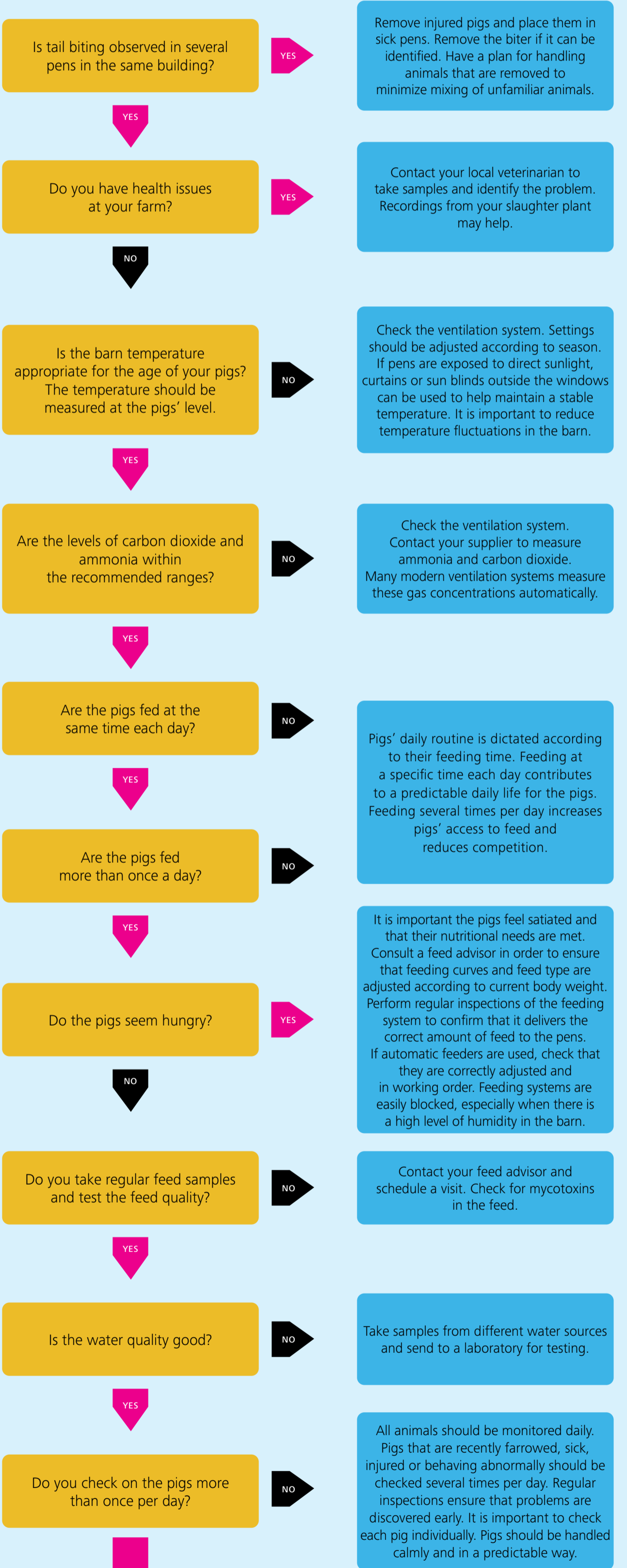
The ABC's of Tail Biting



*Material that can be moved, change appearance or structure.

Contact your local advisor or consultant. Take courses or join seminars. Meet colleagues in the pig industry and exchange experiences.

Indications that your pigs are at risk of tail biting: Nervous and restless animals with increased interest in one another, dirty pens and hanging tails. Taking time to observe your animals should be part of the daily routine.



NB
This guideline is just a suggestion for measures that can be used to prevent and limit tail biting behaviour. The overview is not complete.